



# Printable assessments

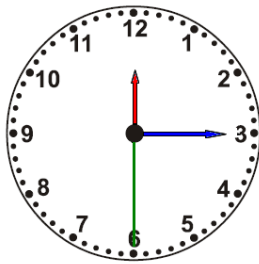
## CAMI Mathematics: Grade 4

### 4. Measurement

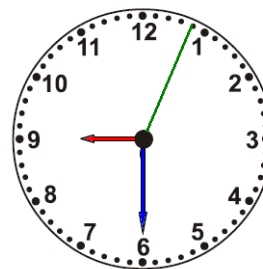
#### 4.4 Time in hours, minutes and seconds

1.1 Reading time in 12-hour format. Provide answer in digital form.

(a)



(b)



1.2 Reading time in 24-hour digital format.

(a)

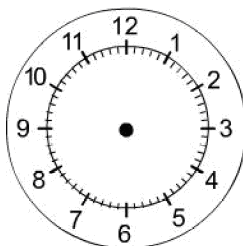
22 : 10 : 08

(b)

10 : 12 : 35

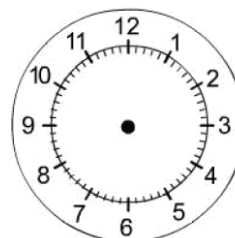
1.3 Show the given time on the clocks provided.

(a)



15 : 15 : 10

(b)



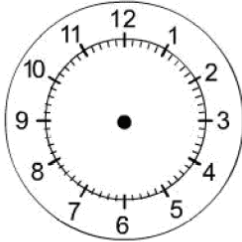
24 : 05 : 00



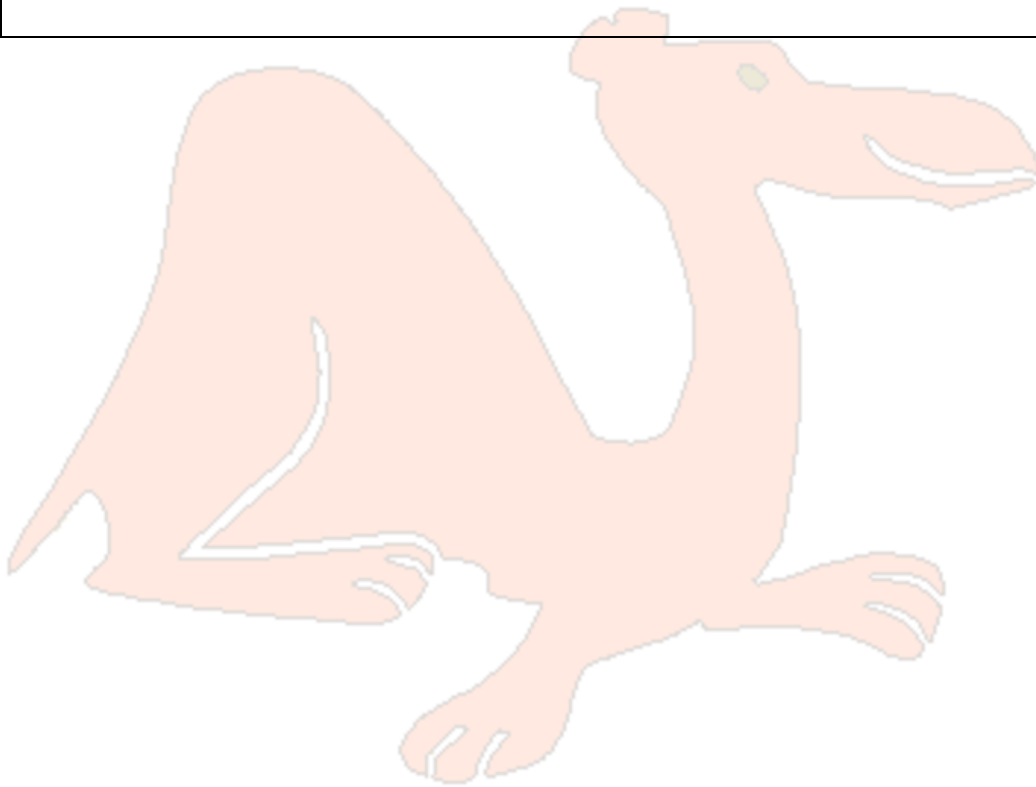
# Printable assessments

## CAMI Mathematics: Grade 4

(c)



05 : 12 : 35





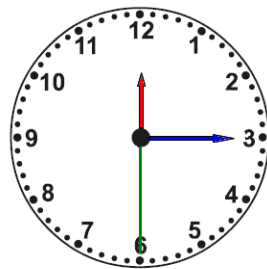
# Printable assessments

## CAMI Mathematics: Grade 4

### MEMO

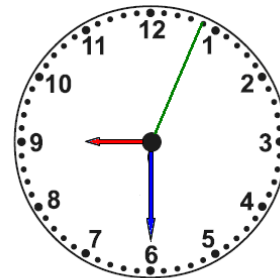
#### 1.1 Reading time in 12-hour format. [9.2.2.8]

(a)



12 : 15 : 30

(b)



09 : 30 : 04

#### 1.2 Reading time in 24-hour digital format. [9.2.2.8]

(a)

22 : 10 : 08

Ten minutes and eight seconds past 10 pm

(b)

10 : 12 : 35

Twelve minutes and thirty five seconds past ten am

#### 1.3 Show the given time on the clocks provided.

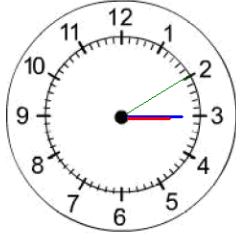
(a)

(b)



# Printable assessments

## CAMI Mathematics: Grade 4

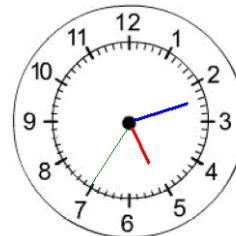


15 : 15 : 10



24 : 05 : 00

(c)



05 : 12 : 35

