



# Printable assessments

## CAMI Mathematics: Grade 4

### 4. Measurement

#### 4.4 Time in hours and minutes

##### 1.1 Reading time in 12-hour format.

(a)



(b)



(c)



(d)



(e)



(f)



(g)



(h)



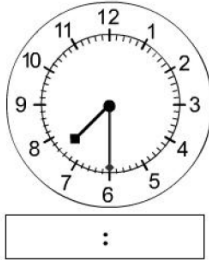


# Printable assessments

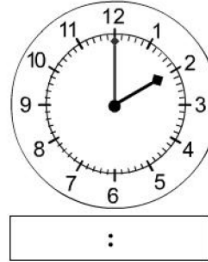
## CAMI Mathematics: Grade 4

### 1.2 Reading time in 12-hour digital format.

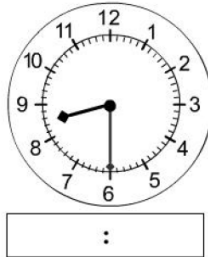
(a)



(b)

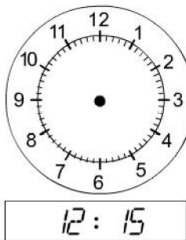


(c)



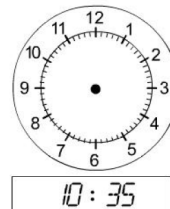
### 1.3 Show the given time on the clocks provided.

(a)



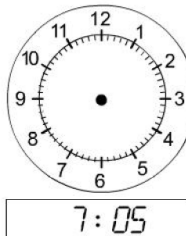
12 : 15

(b)



10 : 35

(c)



7 : 05



# Printable assessments

## CAMI Mathematics: Grade 4

### MEMO

#### 1.1 Reading time in 12-hour format. [9.2.1.5; 9.2.1.6; 9.2.1.7]

(a)



3:50

(b)



11:25

(c)



10:10

(d)



11:55

(e)



7:30

(f)



1:30



# Printable assessments

## CAMI Mathematics: Grade 4

(g)



6:05

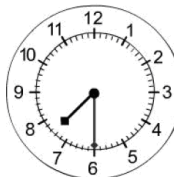
(h)



6:25

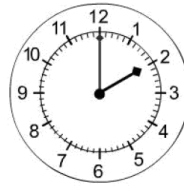
### 1.2 Reading time in 12-hour digital format. [9.2.1.2; 9.2.1.3]

(a)



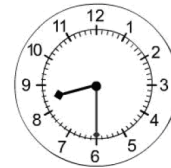
07 : 30

(b)



02 : 00

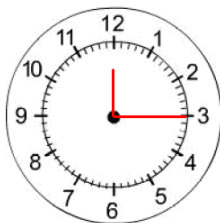
(c)



08 : 30

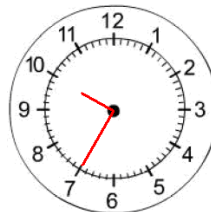
### 1.3 Show the given time on the clocks provided. [9.2.2.7]

(a)



12 : 15

(b)



10 : 35

(c)



7 : 05